

Spiked Star Block 12" (finished)

1" test
square

Unit C (make 4)

White

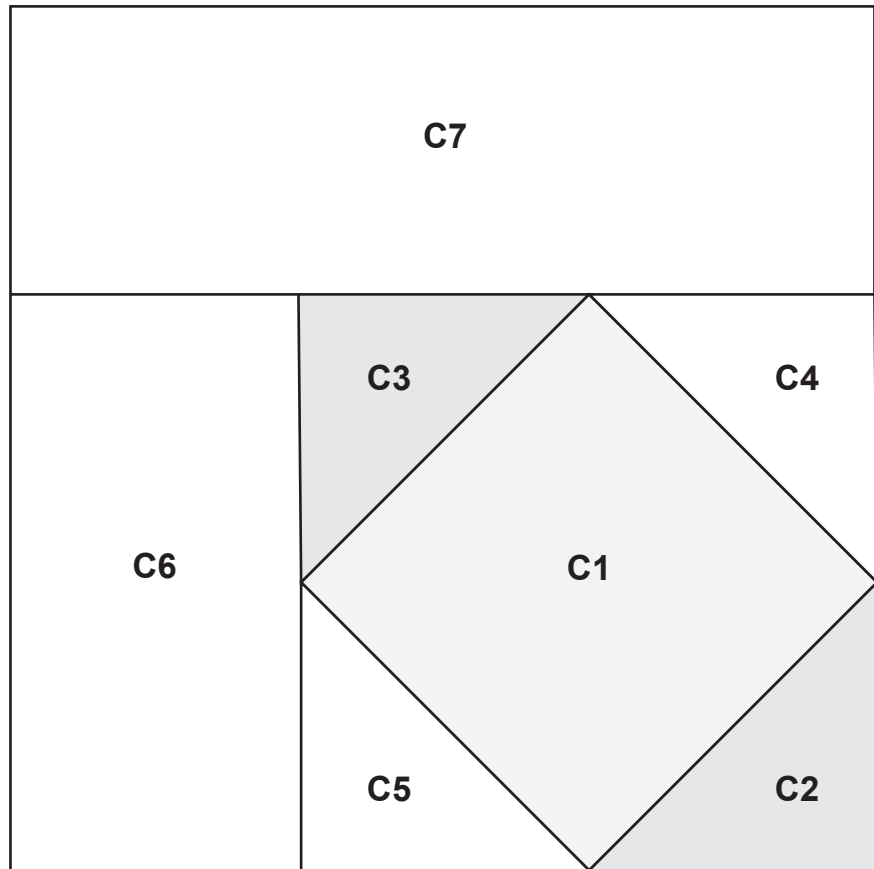
- 1 @ 3 1/4" square
(subcut diagonally)
- 1 @ 5 1/2" x 2 1/2"
- 1 @ 2 1/2" x 4"

Dark Blue

- 1 @ 3 1/4" square
(subcut diagonally)

Light Blue

- 1 @ 3" square



Unit B (make 2)

White

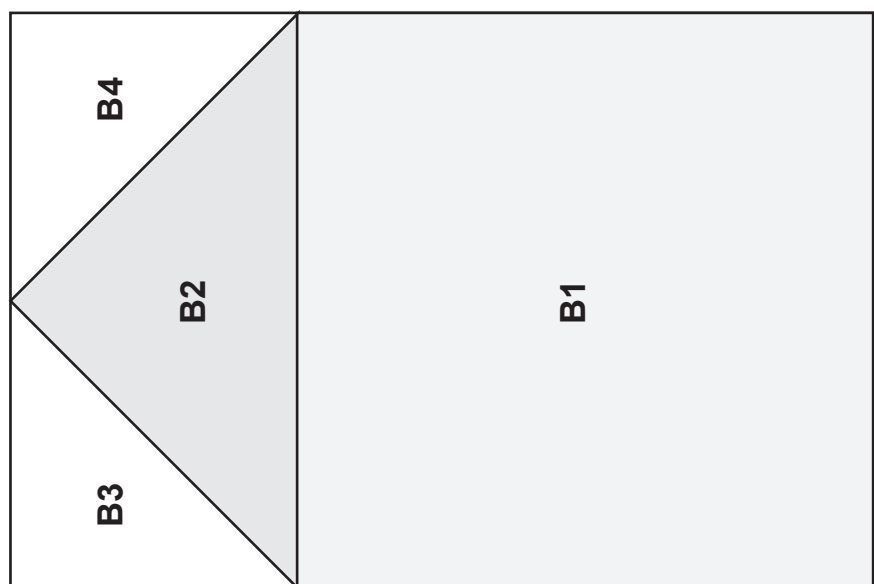
- 1 @ 3 1/4" square
(subcut diagonally)

Dark Pink

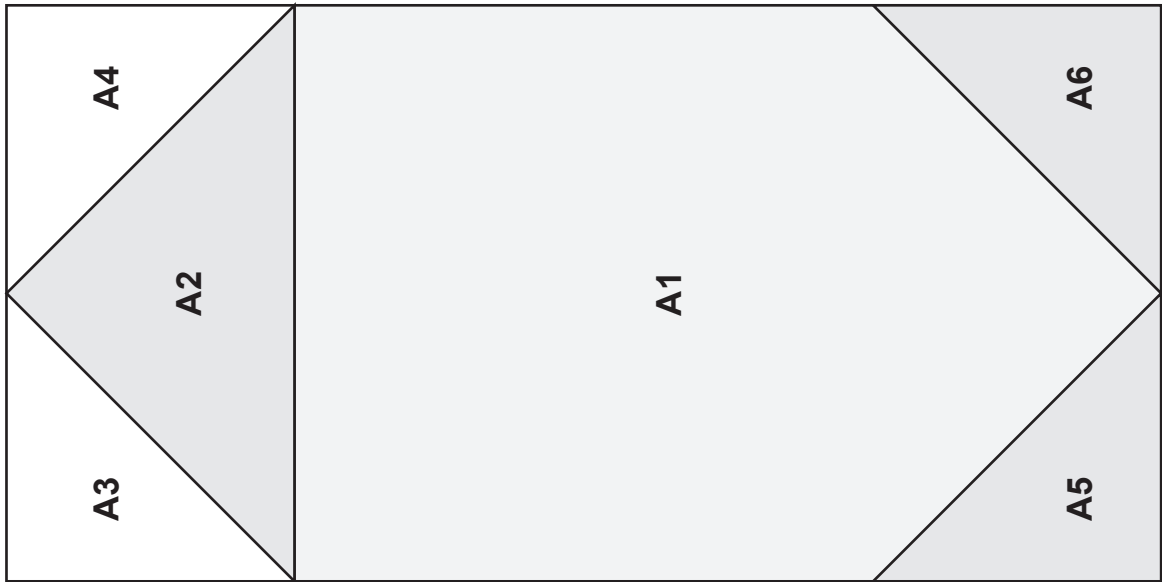
- 1 @ 2 1/2" x 4"

Light Pink

- 1 @ 4 1/2" square



Spiked Star Block 12" (finished)



1" test square

Unit A (make 2)

White

1 @ 3 1/4" square
(subcut diagonally)

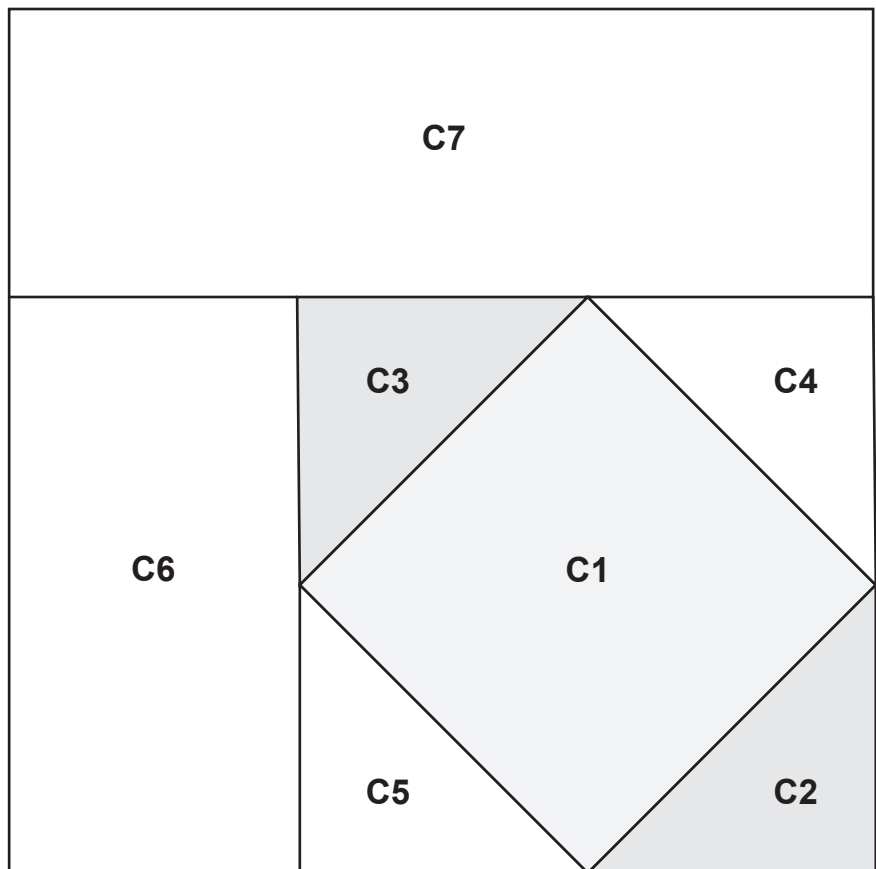
Dark Pink

1 @ 3 1/4" square
(subcut diagonally)

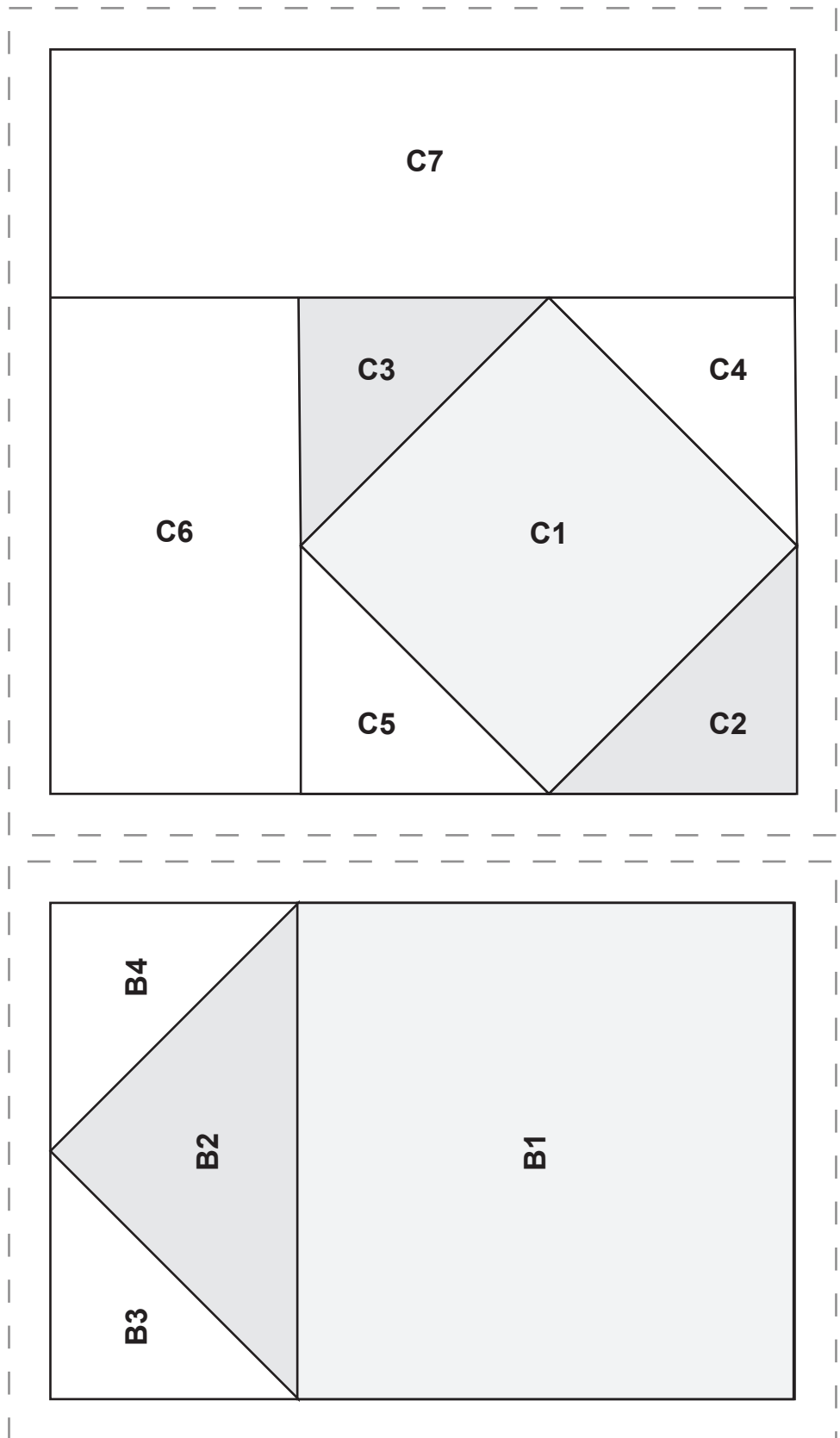
1 @ 2 1/2" x 4"

Light Pink

1 @ 5 1/2" x 4"



Spiked Star Block 12" (finished)



Spiked Star Block 12" (finished)

